

Research



Cite this article: Betti M, Bragazzi NL, Heffernan JM, Kong J, Raad A. 2021 Integrated vaccination and non-pharmaceutical interventions based strategies in Ontario, Canada, as a case study: a mathematical modelling study. *J. R. Soc. Interface* **18**: 20210009.
<https://doi.org/10.1098/rsif.2021.0009>

Received: 5 January 2021

Accepted: 15 June 2021

Subject Category:

Life Sciences—Mathematics interface

Subject Areas:

biomathematics, computational biology

Keywords:

COVID-19 pandemic, non-pharmaceutical interventions, vaccine and immunization campaign, mathematical modelling, Ontario, Canada

Author for correspondence:

Matthew Betti

e-mail: mbetti@mta.ca

Integrated vaccination and non-pharmaceutical interventions based strategies in Ontario, Canada, as a case study: a mathematical modelling study

Matthew Betti¹, Nicola Luigi Bragazzi^{2,3}, Jane M. Heffernan^{2,4}, Jude Kong^{2,4} and Angie Raad^{2,4}

¹Mathematics and Computer Science, Mount Allison University, Sackville, New Brunswick, Canada

²Department of Mathematics and Statistics, Laboratory for Industrial and Applied Mathematics, ³Laboratory for Industrial and Applied Mathematics, and ⁴Centre for Disease Modeling, York University, Toronto, Ontario, Canada M3J 1P3

MB, 0000-0002-1458-5359; JMH, 0000-0001-9502-1688; JK, 0000-0002-7557-5672

Recently, two coronavirus disease 2019 (COVID-19) vaccine products have been authorized in Canada. It is of crucial importance to model an integrated/combined package of non-pharmaceutical (physical/social distancing) and pharmaceutical (immunization) public health control measures. A modified epidemiological, compartmental SIR model was used and fit to the cumulative COVID-19 case data for the province of Ontario, Canada, from 8 September 2020 to 8 December 2020. Different vaccine roll-out strategies were simulated until 75% of the population was vaccinated, including a no-vaccination scenario. We compare these vaccination strategies with relaxation of non-pharmaceutical interventions. Non-pharmaceutical interventions were supposed to remain enforced and began to be relaxed on 31 January, 31 March or 1 May 2021. Based on projections from the data and long-term extrapolation of scenarios, relaxing the public health measures implemented by re-opening too early would cause any benefits of vaccination to be lost by increasing case numbers, increasing the effective reproduction number above 1 and thus increasing the risk of localized outbreaks. If relaxation is, instead, delayed and 75% of the Ontario population gets vaccinated by the end of the year, re-opening can occur with very little risk. Relaxing non-pharmaceutical interventions by re-opening and vaccine deployment is a careful balancing act. Our combination of model projections from data and simulation of different strategies and scenarios, can equip local public health decision- and policy-makers with projections concerning the COVID-19 epidemiological trend, helping them in the decision-making process.

1. Introduction

The severe acute respiratory syndrome coronavirus 2 (SARS-CoV-2) is a novel, emerging coronavirus, belonging to the class of enveloped, single-stranded, positive-sense RNA viruses [1]. SARS-CoV-2 is the infectious agent responsible for the still ongoing coronavirus disease 2019 (COVID-19) pandemic. This respiratory disease is generally mild and even asymptomatic, but in a proportion of cases can worsen, becoming particularly severe and even life-threatening [2].

Owing to the lack of effective vaccines and drugs that could prevent the infection and properly treat patients, as well as given the highly contagious nature of the virus and its quick spread, public health agencies have decided to implement non-pharmaceutical interventions (NPIs) [3]. NPIs have become necessary also due to the unprecedented strain on the health systems

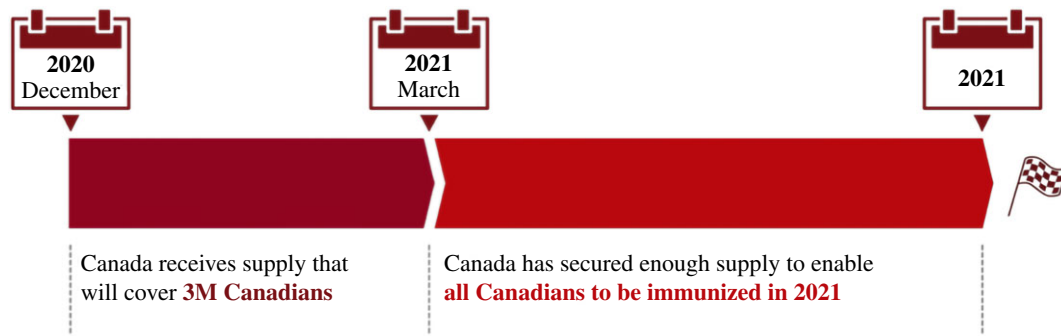


Figure 1. The Federal Government vaccine roll-out plan, adapted from [5].

worldwide. Two major strategies have been developed: an eradication and a mitigation strategy, based on the stringency of the measures adopted [3].

Several vaccine candidates have been designed, and, recently, some of them have entered phase III clinical trials [4]. Immunization campaigns are anticipated to be particularly challenging in that a large number of subjects needs to be vaccinated in a short span of time. Countries will have to face unprecedented logistic and organizational issues, coping with shortage of healthcare personnel staffing. It can be expected that, before immunizing an adequate amount of individuals necessary to achieve herd immunity, public health authorities will have to continue enforcing NPIs. Mathematical modelling can assist public health decision- and policy-makers in the decision-making process, regarding the dynamical modulation of the de-escalation/relaxation of the public health measures adopted, towards a gradual re-opening strategy. We will take Ontario, Canada, as a case study, but our model is a general-purpose one and, after being properly parametrized and informed with locally available data, can be adapted to any country/scenario.

The model presented here is one that hybridizes statistical, data-driven models and mechanistic scenario-based models. The model is able to use a modest data set of known cases to estimate key epidemiological parameters. The mechanistic nature of the model allows us to then modify the model *a posteriori* to account for dynamics that are notably missing in the data. In this case, we focus on modifications involving vaccination strategies competing with reopening strategies. We use Ontario, Canada as a case study as it is the largest province in Canada and has consistently been an area of concern within the country.

1.1. Non-pharmaceutical interventions in Ontario

Canada belongs to those countries that have decided to implement a mitigation rather than an eradication strategy. The first confirmed COVID-19 case was reported on 25 January 2020 and, since then, as of 2 January 2020, Canada has experienced a burden of 590 280 cases, with 15 715 deaths. The Federal government and the province of Ontario have enforced an integrated package of public health interventions. In particular, the Ontario province has closed schools and universities on 14 March, declared emergency on 17 March, restricting public events and recreational venues, and closed non-essential workplaces on 24 March. These control measures have been escalated and gradually become more and more stringent, significantly contributing to mitigate against COVID-19 and saving lives.

1.2. Vaccine deployment in Ontario

Currently, two mRNA-based COVID-19 vaccines have been authorized by the Canadian regulatory body 'Health Canada'.

On 14 December 2020, Canada started administering the first vaccine doses, according to the federal vaccine plan shown in figure 1. The Ontario Government plan consists of three phases: during the phase I, vaccine doses are limited and healthcare workers working in hospitals, long-term care and retirement homes, congregate care settings and other health facilities as well as members of remote, under-served, either urban or rural, Indigenous communities (such as First Nation communities, Métis and Inuit adults) are being prioritized. During phase II, which is likely to start in Winter 2021, the list of people who can get vaccinated will be further expanded. Finally, during phase III, any person willing to be immunized will receive their vaccine doses. Specifically concerning the Ontario province, more than 20 hospitals will be involved in the immunization campaign.

2. Methods

2.1. COVID-19 dynamics model

We use the model and fitting techniques developed in [6]. All data and code are available on a GitHub repository [7]. The modified SIR model is developed to forecast epidemic trajectories using minimal cumulative case data of an outbreak. The model in [6] is used to estimate and quantify the rate of under-reporting, the efficacy of preventative measures in healthcare settings, the basic reproduction number and the efficacy of NPIs. The model uses re-scaled time; time is measured in infection incubation periods, \hat{t} to further reduce the required parameters.

The model is purposefully kept simple to facilitate data-fitting. The main purpose of this model, as outlined in [6], is to provide confident estimates of parameter values from which we can forecast forward. In order to do this effectively with modest datasets during an outbreak, it is necessary to maintain control of the number of parameters.

The compartments we are interested in are the number of mild cases, I_m , the number of severe cases, I_s , the cumulative known cases C_K and cumulative incidence C_I . Mild cases are those which present no or mild symptoms; severe cases are those which present obvious symptoms or require hospitalization. We make the following assumptions in the model:

- The total population is constant.
- Acquired immunity lasts longer than the outbreak.
- There is no co-infection or super-infection.
- The testing/reporting rate in the population is relatively constant.
- The probability of a case being severe versus mild is constant.

- All severe infections are reported, whereas a fraction of mild infections are.

The model equations are then given as

$$\left. \begin{aligned} \frac{dC_I}{dt} &= \underbrace{\mathcal{R}_p}_{\text{reproduction number}} \underbrace{M(\hat{t})}_{\text{non-pharmaceutical intervention}} \underbrace{\left(1 - \frac{C_I}{N}\right)}_{\text{proportion of population still susceptible}} (I_m + pI_s) \\ \frac{dC_K}{dt} &= \underbrace{r}_{\text{reporting rate}} \underbrace{(1-p_s)}_{\text{proportion mild infection}} \frac{dC_I}{dt} + p_s \frac{dC_I}{dt} \\ \frac{dI_m}{dt} &= (1-p_s) \frac{dC_I}{dt} - I_m \\ \text{and } \frac{dI_s}{dt} &= p_s \frac{dC_I}{dt} - I_s \end{aligned} \right\} \quad (2.1)$$

where N is the total susceptible population, \mathcal{R}_p is the population reproduction number which differs from the basic reproduction number as we calculate this value in the middle of an outbreak for a specific population; for a discussion on the basic reproduction number and its estimate see [6], p_s is the probability of severe infection, r is the average testing/reporting rate, $M(\hat{t})$ is a mitigation function, and \hat{t} is time scaled by the average infectious lifetime $1/\mu$.

Note that Model (2.1) accounts for, but does not assume, that severe infections are less infectious than mild or asymptomatic infections by a factor of p . We include p since in novel or dangerous epidemics severe cases are often managed and quarantined once known. Figure 2 shows a compartmental diagram of Model (2.1).

Model (2.1) is coupled with four initial conditions, derived from three parameters:

$$\left. \begin{aligned} I_m(0) &= I_{m0}, \\ I_s(0) &= I_{s0}, \\ C_K(0) &= C_{K0} \\ \text{and } C_I(0) &= I_{m0} + I_{s0} + R, \end{aligned} \right\} \quad (2.2)$$

where R is the number of cases that have already recovered or died by the time we start fitting data.

$$\left. \begin{aligned} \frac{dC_I}{dt} &= \mathcal{R}_p M(\hat{t}) \left(1 - \frac{C_I}{N(\hat{t})}\right) (I_m + pI_s), \\ \frac{dC_K}{dt} &= r(1-p_s) \mathcal{R}_p M(\hat{t}) \left(1 - \frac{C_I}{N(\hat{t})}\right) (I_m + pI_s) + p_s \mathcal{R}_p M(\hat{t}) \left(1 - \frac{C_I}{N(\hat{t})}\right) (I_m + pI_s), \\ \frac{dI_m}{dt} &= (1-p_s) \mathcal{R}_p M(\hat{t}) \left(1 - \frac{C_I}{N(\hat{t})}\right) (I_m + pI_s) - I_m \\ \text{and } \frac{dI_s}{dt} &= p_s \mathcal{R}_p M(\hat{t}) \left(1 - \frac{C_I}{N(\hat{t})}\right) (I_m + pI_s) - I_s. \end{aligned} \right\} \quad (2.4)$$

As an example, we employ

$$N(t) = \left(1 - \frac{L}{1 + e^{-d(t-\hat{s})}}\right) N, \quad (2.5)$$

where L is the proportion of the population we expect to be vaccinated, \hat{s} and d are shape parameters that determines how quickly the vaccine is deployed.

2.3. Data fitting

We fit our model to the cumulative case data for the province of Ontario from 8 September 2020 to 8 December 2020 for the 2020 COVID-19 pandemic; 8 September 2020 was chosen because of the observed significant increase in the number of reported infected cases. Fits were done until 8 December 2020 as at the time of the analyses this was the most current data

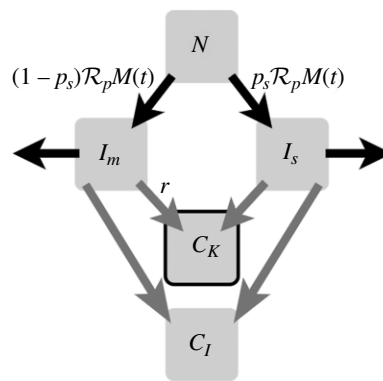


Figure 2. A compartmental diagram of Model (2.1). From a population N , we assume infection presents as either mild or severe with probability p_s . Infection spreads at rate $\mathcal{R}_p M(t)$. Infection clears at rate 1. All infections are added to two compartments: C_I , the cumulative case load of the outbreak and C_K the known case load. All severe infections are assumed to be known and reported, and a fraction r of mild infections are known and reported. The compartment C_K is highlighted as it is the compartment we use to fit to data.

The function $M(t)$ is a predetermined function that captures the effects of non-pharmaceutical interventions on rates of infection. When fitting, we use a functional form of

$$M(t) = k + (1 - k) e^{-mt}. \quad (2.3)$$

This allows us to quantify both socially driven relaxation and adherence to non-pharmaceutical interventions.

2.2. Vaccine deployment versus social distancing

The primary aim of vaccination is to reduce the number of susceptible individuals in the community. This is accounted for with the change $N \rightarrow N(t)$. $N(t)$ is defined as a function which starts at $N(\hat{s}) = N$, where N is the total population and \hat{s} is the day of vaccine deployment, and approaches the expected vaccinated population $N(s^*) = vN$ for $0 \leq v \leq 1$.

available. Of course, projections can be adjusted by taking more recent data as it is made available.

To reduce the number of scenarios considered, we fit system (2.1) to cumulative case data prior to vaccine deployment. Using the fitted parameters, we can then explore different functional forms of $N(t)$ to determine the effects of different vaccination strategies on the epidemic curve. We fit the vector of parameters:

$$\mathbf{v} = [I_{m0}, I_{s0}, \mathcal{R}_p, N, p, r, \mu, k, d] \quad (2.6)$$

using least squares on the cumulative reported cases per day and the new daily reported cases

$$G(\mathbf{v}) = \sum_{t \in t_{\text{data}}} (C_K(t; \mathbf{v}) - (\tilde{C}_K)_t)^2 + ((C'_K(t; \mathbf{v}) - ((\tilde{C}_K)_t - (\tilde{C}_K)_{t-1})))^2. \quad (2.7)$$

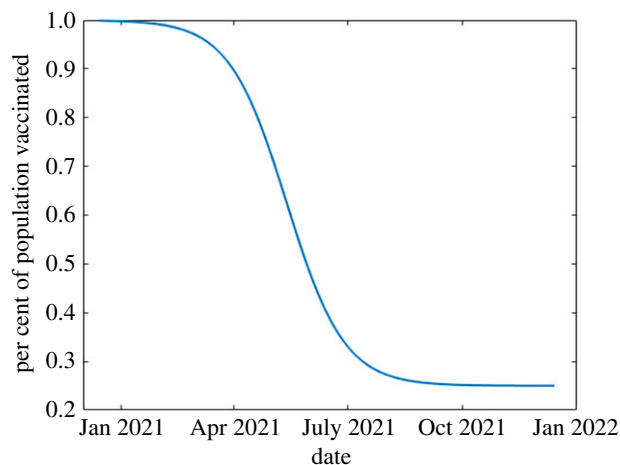


Figure 3. A visualization of equation (2.8). We can see that by March 2021, 10% of the population of Ontario is expected to be vaccinated. By the end of 2021, we expect to approach 75% of the population to be vaccinated.

Table 1. Parameter values to inform equation (2.8). Values are taken from the literature to best match the current public sentiment of a COVID-19 vaccine and its the government's plans to roll-out the vaccine.

parameter	value	reference
L	0.75	[8]
d	0.433	[5]
T	24.73	[5]

As described in [6], we bootstrap the fitting by running 1000 fits starting from randomized initial guesses and over random subsets of the data. We then average over all simulations. This process has two benefits: it allows us to perform sensitivity analysis while simultaneously avoiding problems caused by complex surfaces with many local minima.

2.3.1. Outcome of different vaccine roll-out strategies

Using the estimated parameters, we explore different scenarios that could result with vaccine roll-out. We start by defining a logistic roll-out strategy

$$N(t) = \left(1 - \frac{L}{1 + e^{-d(t-T)}}\right)N. \quad (2.8)$$

We choose a logistic form of $N(t)$ as it is the simplest functional form that allows for (a) a ramping up of vaccine procurement and deployment and (b) saturation. Later on, we also consider a linear vaccination strategy where daily deployment is constant until 75% of the population is vaccinated.

Using public data about the vaccine roll-out [5,8], we set parameters of $N(t)$. We use $L = 0.75$ based on a STATCAN survey [8]; meaning we are limited to 75% of the population of Ontario getting vaccinated. Using the projections from [5], we set d and T such that approximately 10% of the population will be vaccinated by March 2021 and all voluntary vaccination will be completed by the end of 2021. This gives us $d \approx 0.433$ and $T = 24.73$, keeping in mind our re-scaled time from the fitting. We first study the outcome of this vaccination strategy assuming that the non-pharmaceutical interventions are to remain in place at the current levels of acceptance and adherence. These parameters are summarized in table 1 and the vaccination curve is shown in figure 3.

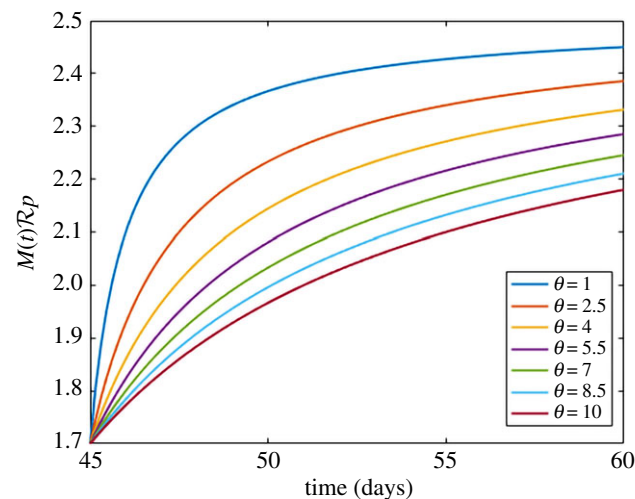


Figure 4. A visualization of equation (2.9). By changing θ , we are able to control the speed of relaxation efforts. A lower value of θ leads to accelerated relaxation. We relax from our fitted value of \mathcal{R}_p to the accepted value of R_0 for COVID-19 of 2.5.

Table 2. Estimated model parameters for Ontario for 8 September 2020 to 8 December 2020.

\hat{t}	$t/10$
\mathcal{R}_p	1.58 ± 0.16
p	0.0018 ± 0.01
r	0.0004 ± 0.002
k	0.81 ± 0.27
m	0.54 ± 0.41

Of course, at some point non-pharmaceutical interventions must be lifted. We can compete these two factors by modifying $M(t)$. If we allow

$$M(t) = \mathcal{R}_p + \left(\frac{\mathcal{R}_p}{2.5} \frac{(t - \tau)}{\theta + t - \tau}\right)(2.5 - \mathcal{R}_p) \quad t \geq \tau \quad (2.9)$$

for $t > t^*$ where t^* is when we begin relaxation of non-pharmaceutical interventions. The parameter θ is a shaping parameter that controls the speed of relaxation. Relaxation from the current value of \mathcal{R}_p to the accepted average basic reproduction number of 2.5 is shown in figure 4 for different values of θ . A Holling Type II function is the simplest function that allows for relaxation over time as well as saturation.

We set τ to be the date relaxation begins and set θ accordingly so that by the end of 2021, non-pharmaceutical interventions are completely relaxed. We maintain that $M(t)$ is a function of time alone so that we are can remain general about how and when these relaxations may manifest themselves. For instance, non-pharmaceutical interventions may relax through policy, fatigue, or apathy as interventions remain in place for long periods of time.

3. Results

3.1. Parameter estimation

Table 2 details the estimated parameter values obtained from fitting the vaccine and social dynamics model to the reported cumulative case data for the province of Ontario from 8 September to 8 December 2020. As expected, the estimated \mathcal{R}_p is below the current accepted basic reproduction number

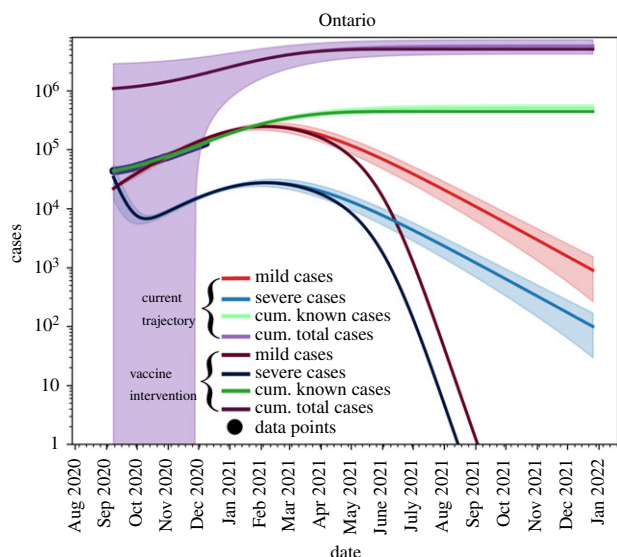


Figure 5. Light lines: no vaccine trajectories. Dark lines: with Vaccine using (2.8). Shaded areas represent the 95% confidence interval obtained from the fits. The current vaccination roll-out plan will not take hold in the population until *after* we reach the peak of the outbreak. Known data points are given as black dots.

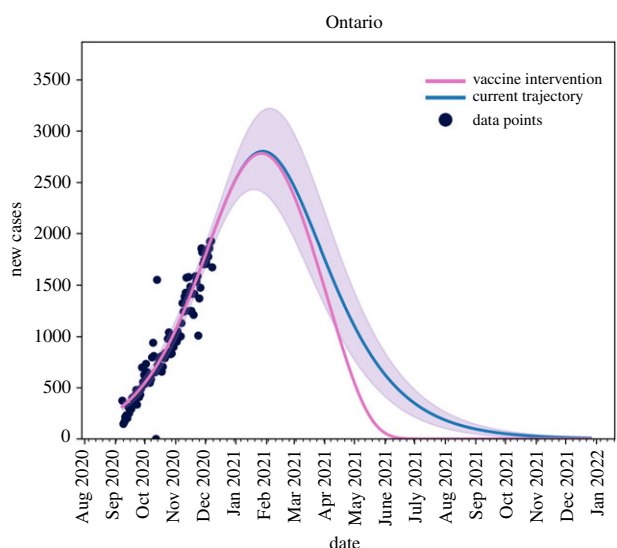


Figure 6. The blue line is the current trajectory of new reported cases per day in Ontario if the current level of non-pharmaceutical interventions are maintained. The pink line shows the possible trajectory under vaccine roll-out of equation (2.8) and non-pharmaceutical interventions and maintained without relaxation. Known data points are given as black dots.

of $\mathcal{R}_p = 2.5$ [6,9,10]; this is a result of using the reported data from September 2020, where NPIs are in place.

3.2. Outcome of different vaccine roll-out strategies

3.2.1. Assuming a 75% vaccination rate in Ontario with fixed non-pharmaceutical interventions

Shown in figure 5 are the total cases (purple), known cases (green), active mild cases (red) and active severe cases (blue). We see that all active cases are resolved by September 2021, given the vaccination strategy used in the simulation.

As shown in figure 6, when considering the current infection rate, with the assumption that will approach 75% vaccination of the population by September 2021, we observe that the effect of

the vaccine will only be seen after the peak has occurred where the province will be able to ensure that the outbreak ends around July 2020 (pink line) rather than January 2022, as seen in the case of no vaccine roll-out (blue line).

3.2.2. Relaxation

For the sake of comparison, we present a scenario whereby NPIs relaxation starts on 8 December 2020 without any vaccination plan. This scenario is presented in figure 7 as a worst case scenario stemming from the model. As expected, without any mitigation strategies we would observe a greater number of infected cases, compared to the case where a 75% vaccination rate is assumed with NPIs remaining in place at the current levels of acceptance and adherence.

The figure shows that by removing NPIs without any vaccination, we will see an approximately 80% attack rate in Ontario. This is in line with estimates provided by other models [11,12].

3.2.3. Assuming a 75% vaccination rate in Ontario and non-pharmaceutical interventions relaxed quickly

Figure 8 shows the effects of relaxing NPIs too early. For this scenario, we set $T = 14.5$ and $\theta = 10$. We see that all active cases are still resolved by September 2021 (figure 8a) and we see no new cases by July 2021 (figure 8b), but the in the interim the caseload in the province increases.

3.2.4. Assuming a 75% vaccination rate in Ontario current non-pharmaceutical interventions relaxed from 31 March 2021

Figure 9 shows that phasing in relaxation starting on 31 March 2021 allows the province of Ontario to maintain control of vaccination roll-out and reopening. In this case, we vary θ and set $T = 20.4$. We seen in figure 9a,d that if we phase-in reopening slowly then we can maintain control of the outbreak and allow for the realization of vaccination to be seen. Figure 9b,e,f,c shows that increasing the speed of reopening can be detrimental to the control of the outbreak and can outpace the vaccine roll-out.

3.2.5. Assuming a 75% vaccination rate in Ontario current non-pharmaceutical interventions completely removed on 1 May 2021

Figure 10 shows the effects of removing all restrictions, immediately ($\theta = 0$) on 1 May 2021. We see that by May 2021, we are able to reopen without risk of significant increase of new cases. In figure 10a, we see that the cumulative caseload does not change significantly, but figure 10b shows a non-negligible increase in new cases as reopening occurs.

3.3. A linear vaccination strategy

We can also look at a more hypothetical, but equally valid vaccination strategy employed by the equation

$$N(t) = \left(1 - \frac{L}{365}(t - T)\right)N \quad (3.1)$$

which suggests a constant vaccination rate across the population. Figure 11a we see that active cases with such a strategy are not resolved until December 2021, and in figure 11b we see that we continue to observe new cases until August 2021.

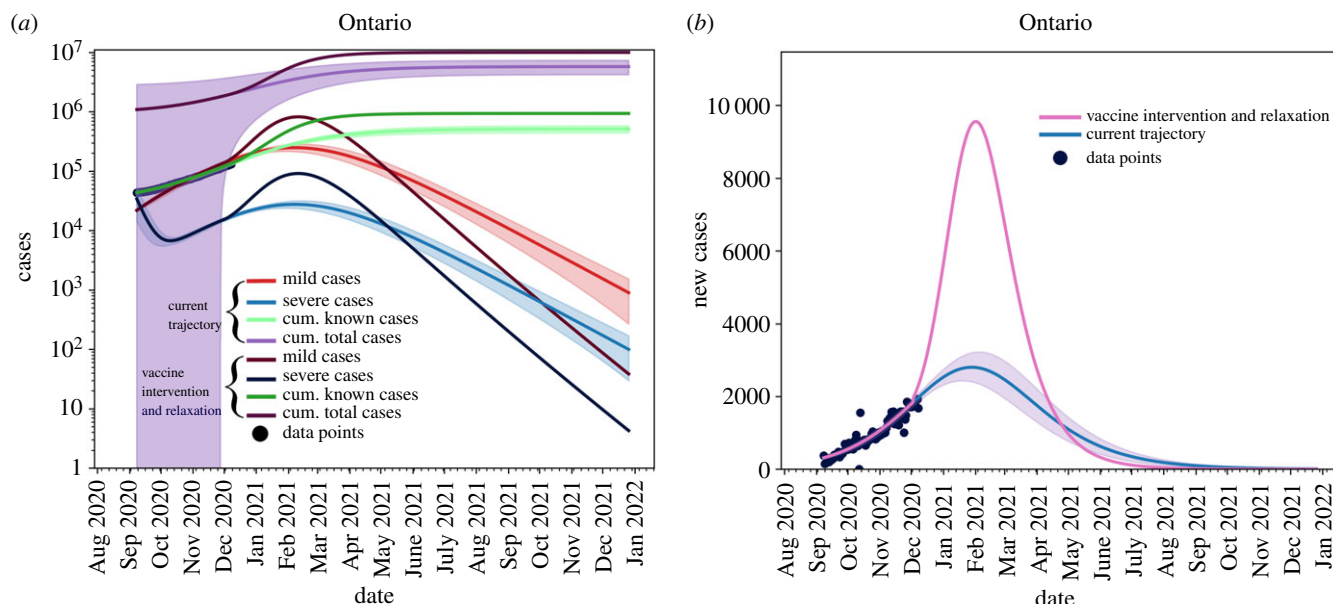


Figure 7. Removing non-pharmaceutical interventions on 8 December 2020 with no re-implementation and without vaccination. Again, blue line is the current trajectory, shaded region is the 95% confidence area and the pink line is the modified scenario. (a) Cumulative and active cases, (b) new reported cases.

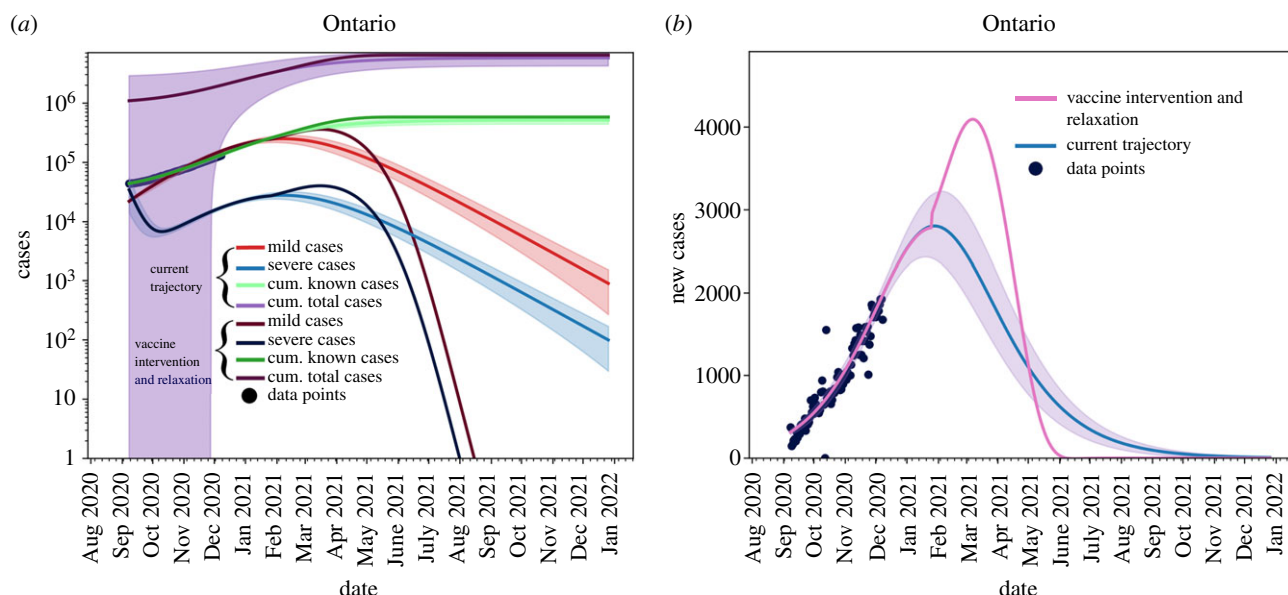


Figure 8. Removing non-pharmaceutical interventions on 31 January 2021 creates a massive increase in cases, but vaccine roll-out has a large effect on mitigating cases. (a) Cumulative and active cases, (b) new reported cases.

3.4. Date the effective reproduction number will be less than 1 for different vaccination percentages and non-pharmaceutical interventions relaxation measures

The effective reproduction number is given by

$$\mathcal{R}_{\text{eff}} = R_0 M(t) \left(1 - \frac{C_I}{N(t)} \right). \quad (3.2)$$

It shows the average number of cases one active case will create.

Figure 12 shows the effects of the different relaxation/vaccination strategies on the effective reproduction number. The different coloured lines represent the different scenarios described above. The dashed lines show when we have an $\mathcal{R}_{\text{eff}} < 1$ for each strategy. The figure suggests that reopening in

May 2021 presents the least risk for a new outbreak to occur. By reopening earlier, we risk \mathcal{R}_{eff} increasing above 1 for a longer period of time, creating increased risk for large outbreaks.

4. Interpretation

We explored the effects of an integrated/combined package of both pharmaceutical and non-pharmaceutical public health control measures. We demonstrated that these two interventions need to be fully harmonized in order to be able to properly control the spread of the outbreak. In the literature, there are some models modelling the impact of COVID-19 vaccination in terms of the epidemiological trend of the pandemic. For example, Libotte and coauthors [13] designed a mathematical compartmental SIR model and explored two major scenarios, according to the optimal control theory, and

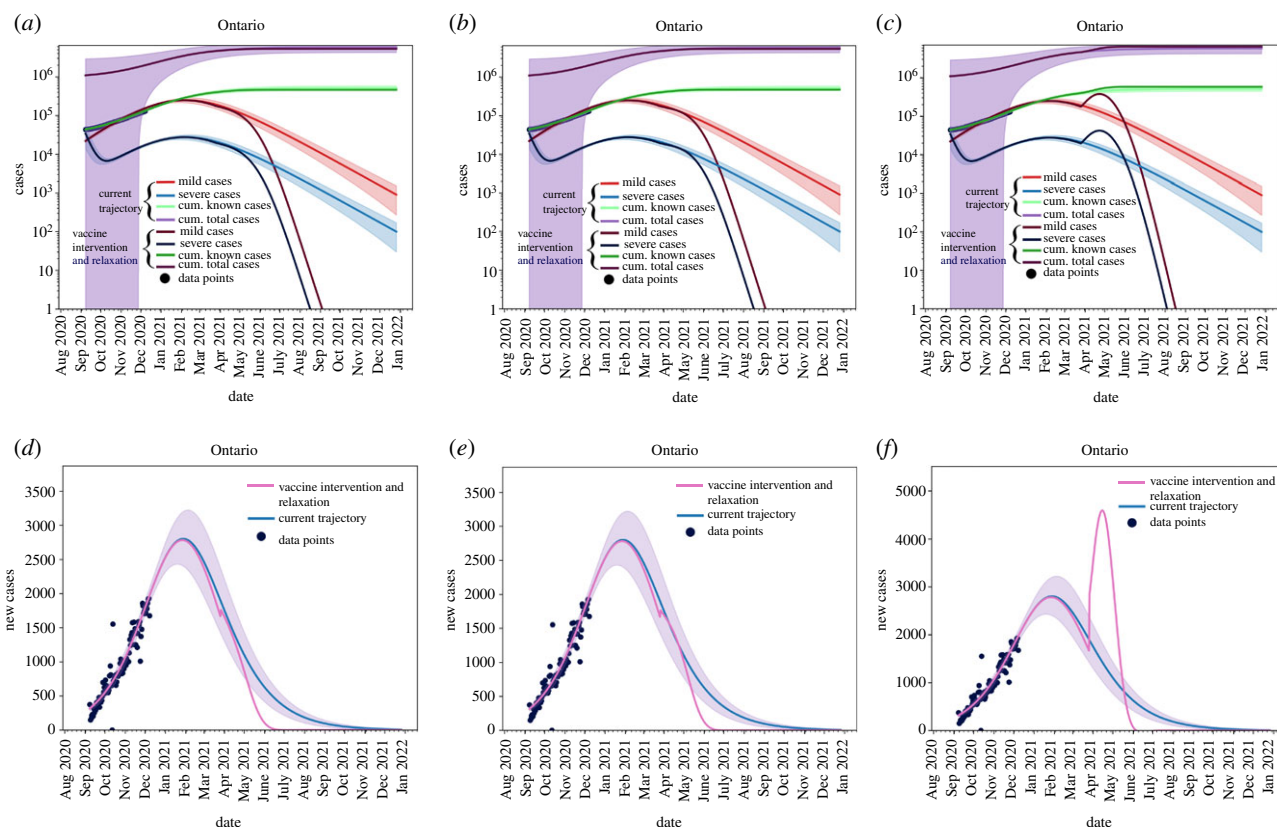


Figure 9. Removing non-pharmaceutical interventions on 31 March 2021 can be controlled. (a) $\theta = 20$, (b) $\theta = 10$, (c) $\theta = 0$, (d) $\theta = 20$, (e) $\theta = 10$, (f) $\theta = 0$.

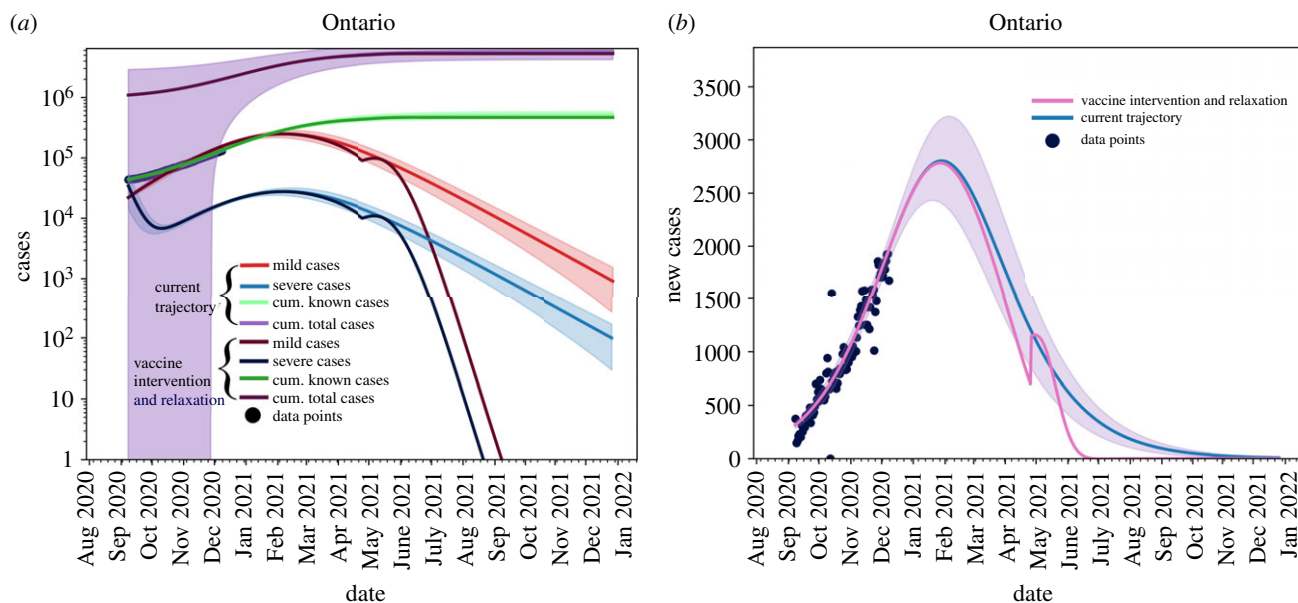


Figure 10. Removing non-pharmaceutical interventions on 1 May 2021; we need to be fairly low on the outbreak curve to remove restrictions without phasing. (a) Cumulative and active cases, (b) new reported cases.

informing the model by real-data from China. The first strategy assessed consisted of minimizing the number of infected individuals, whereas in the second scenario the minimization of vaccine dose was also taken into account.

Jentsch *et al.* [14] devised a coupled social–epidemiological model, simulating schools and unessential workplaces closures, using an evolutionary game theory-based approach and exploiting mobility data. Some vaccination strategies were age-based, whereas others targeted social contacts, or particularly frail and vulnerable groups. Immunization

could curb deaths by 22–77%. Vaccine availability impacted the proportion of preventable deaths: in case of vaccines already available since January 2021, targeting seniors first would be the most optimal strategy, whereas, in case of availability from July 2021 on, targeting social contacts first would result in better control of the outbreak.

Similar results were obtained by Grundel *et al.* [15], who combined an optimization-based control approach with an age-dependent epidemiological model. To be able to relax physical/social distancing measures, a vaccination strategy

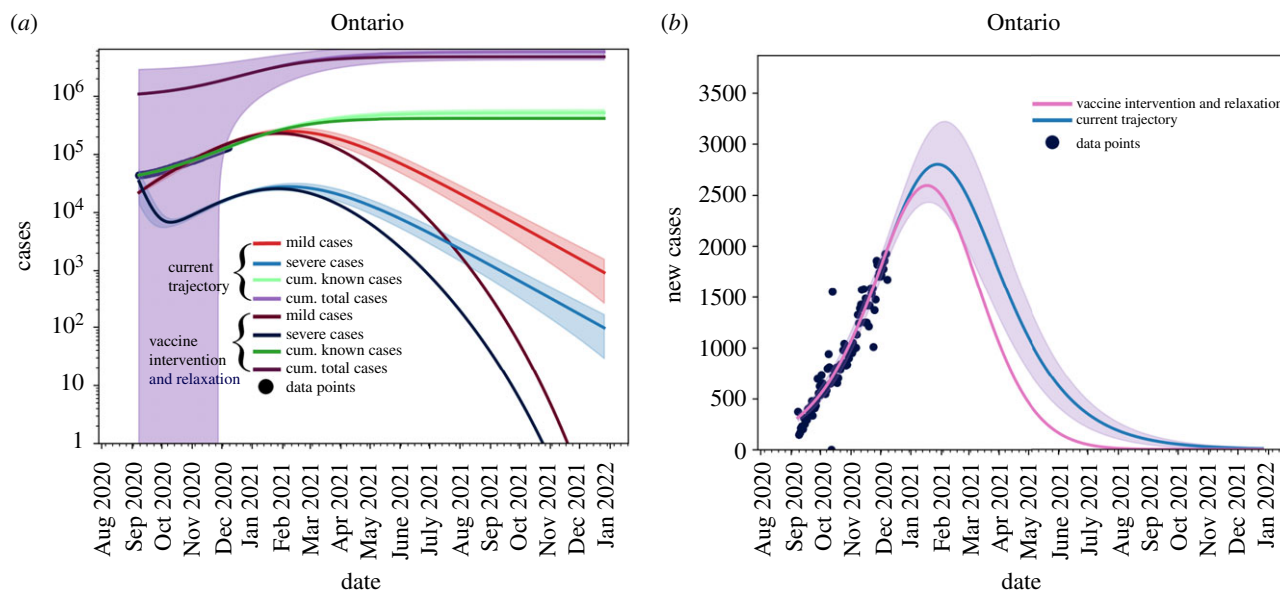


Figure 11. A constant vaccination rate will allow for a mitigating outbreak peak at the expense of a longer outbreak tail. (a) Cumulative and active cases, (b) new reported cases.

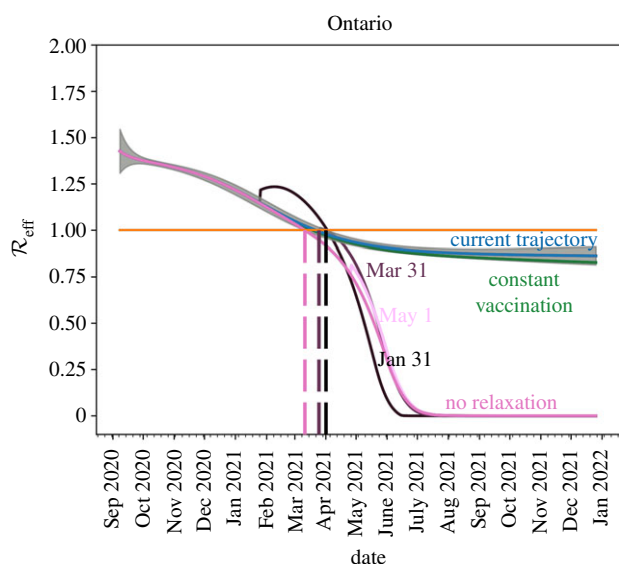


Figure 12. A reduction of R_{eff} with target dates for different scenarios described above. We see that opening too early will cause R_{eff} to increase above 1 which will increase the risk of localized outbreaks. If relaxation is delayed until May 2021 and phased-in, reopening can occur with very little risk.

targeting high-risk subjects was more effective in the short-term, whereas an approach based on the reduction in social contact rates was the optimal choice in the long-term. In terms of vaccine doses and effectiveness, authors found that greater amounts of a less effective vaccine resulted in more relaxed NPIs with respect to less amounts of a more effective vaccine.

We are able to leverage the current outbreak trajectory through data-fitting to refine scenario-based approaches that compete reopening with vaccination. Current vaccination strategies employed throughout the country are focused on high-risk rather than high-transmission populations. As reopening is, generally, not age-dependent (except school re-openings), and the focus of vaccination is on reducing risk, not necessarily transmission, the questions addressed herein would not benefit from an age-structured model. Moreover, an age-structured model would necessarily increase the number of parameters fitted to unreasonable numbers, given the data available.

The goal is to give potential dates to consider reopening with lowest risk, and timelines of potential herd immunity (in most cases, our results estimate that we will reach minimal cases per day by the end of second quarter 2021). While an age-structured model would be beneficial for developing policies in greater detail, the age-structured case data are sparse at best. In [16], age-related data are given at a weekly resolution and are updated infrequently. While the model and methods introduced in [6] and used here are able to fit age-structured data (even those sparsely provided) it is difficult to extend scenarios from such data at said resolution.

Moreover, our study focused on the provincial level (Ontario), as a case study. At the global level or regional level, few predictive models exist. For instance, by incorporating expert opinions and mathematical models, McDonnell *et al.* [17] have estimated that due to the time of manufacture and distribution of the vaccine, sufficient doses globally are likely not to be available before September 2023. While our model equips local decision- and policy-makers with projections about the future epidemiological trend of the COVID-19 outbreak. It would be extremely useful to provide public health agencies across the world with a tool that is flexible enough to explore the effect of different mitigation strategies.

5. Conclusion

Reopening and vaccine deployment is a careful balancing act. Using our mathematical model, we extensively explore the effect of adopting various vaccination and relaxation strategies on the COVID-19 epidemiological long-term projections. Our model shows that while we need not wait for herd immunity to begin relaxation of NPIs, careful monitoring of the situation is required. The model shows that relaxation in Ontario, Canada could be safely implemented as early as May 2021, given a strong vaccination effort. Our linear strategies for vaccination show that reopening would require a significant delay. Our findings are able to provide public health bodies with important insights on the effect

of adopting various mitigation strategies, thereby guiding them in the decision-making process.

Data accessibility. All data and implementation of the model can be found at <https://github.com/mbetti-phd/Covid-SimpleModel>. Publicly available data are retrieved from <https://www.canada.ca/en/publichealth/services/diseases/2019-novel-coronavirus-infection.html#a1>.

Authors' contributions. Conceptualization, M.B., J.M.H. and J.K.; methodology, M.B. and J.M.H.; software, validation, investigation, data

curation and visualization M.B.; resources, N.B. and J.K.; writing—original draft preparation, writing—review and editing, M.B., N.L.B., J.K. and A.R.; supervision, J.M.H. All authors have read and agreed to the published version of the manuscript.

Competing interests. We declare we have no competing interests.

Funding. Funding was provided by NSERC Discovery Grants.

Acknowledgements. The authors would like to thank the editors and reviewers for their insights and improvements to the manuscript. We would also like to thank the Public Health Agency of Canada's External Modeling Experts Group for lively discussions.

References

1. Coronaviridae Study Group of the International Committee on Taxonomy of Viruses. 2020 The species severe acute respiratory syndrome-related coronavirus: classifying 2019-ncov and naming it SARS-CoV-2. *Nat. Microbiol.* **5**, 536–544. (doi:10.1038/s41564-020-0695-z)
2. Almanasef M, Vasudevan R, Chandramohan S, Almaghaslah D, Kandasamy G. 2020 Review on the coronavirus disease (COVID-19) pandemic: its outbreak and current status. *Int. J. Clin. Pract.* **74**, e13637. (doi:10.1111/ijcp.13637)
3. Duhon J, Bragazzi N, Kong JD. 2020 The impact of non-pharmaceutical interventions, demographic, social, and climatic factors on the initial growth rate of COVID-19: a cross-country study. *Sci. Total Environ.* **760**, 144325. (doi:10.1016/j.scitotenv.2020.144325)
4. Upshur REG, Singh JA. 2020 The granting of emergency use designation to COVID-19 candidate vaccines: implications for COVID-19 vaccine trials. *Lancet Infect. Dis.* **21**, e103–e109. (doi:10.1016/S1473-3099(20)30923-3)
5. Government of Canada. The overall rollout approach. Canada's COVID-19 Immunization Plan: Saving Lives and Livelihoods. <https://www.canada.ca/en/public-health/services/diseases/2019-novel-coronavirus-infection/canadas-reponse/canadas-covid-19-immunization-plan.html#a8> (accessed 29 December 2020).
6. Betti MI, Heffernan JM. 2020 A simple model for fitting mild, severe, and known cases during an epidemic with an application to the current SARS-CoV-2 pandemic. *Infect. Dis. Model.* **6**, 313–323. (doi:10.1016/j.idm.2021.01.002)
7. Data and code for: integrated vaccination and non-pharmaceutical interventions based strategies in Ontario, Canada, as a case study: a mathematical modeling study. See <https://github.com/mbetti-phd/Covid-SimpleModel>.
8. Statistics Canada. Canadians' willingness to get a COVID-19 vaccine: group differences and reasons for vaccine hesitancy. See <https://www150.statcan.gc.ca/n1/pub/45-28-0001/2020001/article/00073-eng.htm> (accessed 29 December 2020).
9. Dashraath P, Wong JL, Lim MX, Lim LM, Li S, Biswas A, Choolani M, Mattar C, Su LL. 2020 Coronavirus disease 2019 (COVID-19) pandemic and pregnancy. *Am. J. Obstet. Gynecol.* **222**, 521–531. (doi:10.1016/j.ajog.2020.03.021)
10. Tuite AR, Fisman DN, Greer AL. 2020 Mathematical modelling of COVID-19 transmission and mitigation strategies in the population of Ontario, Canada. *CMAJ* **192**, E497–E505. (doi:10.1503/cmaj.200476)
11. Jing Q-L *et al.* 2020 Household secondary attack rate of COVID-19 and associated determinants in Guangzhou, China: a retrospective cohort study. *Lancet Infect. Dis.* **20**, 1141–1150. (doi:10.1016/S1473-3099(20)30471-0)
12. Zhang X, Ma R, Wang L. 2020 Predicting turning point, duration and attack rate of COVID-19 outbreaks in major western countries. *Chaos Solitons Fractals* **135**, 109829. (doi:10.1016/j.chaos.2020.109829)
13. Libotte GB, Lobato FS, Platt GM, Silva Neto AJ. 2020 Determination of an optimal control strategy for vaccine administration in COVID-19 pandemic treatment. *Comput. Methods Programs Biomed.* **196**, 105664. (doi:10.1016/j.cmpb.2020.105664)
14. Jentsch P, Anand M, Bauch CT. 2020 Prioritising COVID-19 vaccination in changing social and epidemiological landscapes. *medRxiv*. (doi:10.1101/2020.09.25.20201889)
15. Grundel S, Heyder S, Hotz T, Ritschel TK, Sauerteig P, Worthmann K. 2020 How to coordinate vaccination and social distancing to mitigate SARS-CoV-2 outbreaks. *medRxiv*. (doi:10.1101/2020.12.22.20248707)
16. Statistics Canada. Table 13-10-0775-01 detailed preliminary information on cases of COVID-19: 4 dimensions (aggregated data), public health agency of Canada. See <https://www150.statcan.gc.ca/t1/tbl1/en/tv.action?pid=1310077501> (accessed 29 December 2020).
17. Subramanian L *et al.* 2020 *Covid-19 vaccine predictions: using mathematical modelling and expert opinions to estimate timelines and probabilities of success of COVID-19 vaccines*. CGD Policy Paper 183. Washington, DC: Center for Global Development.